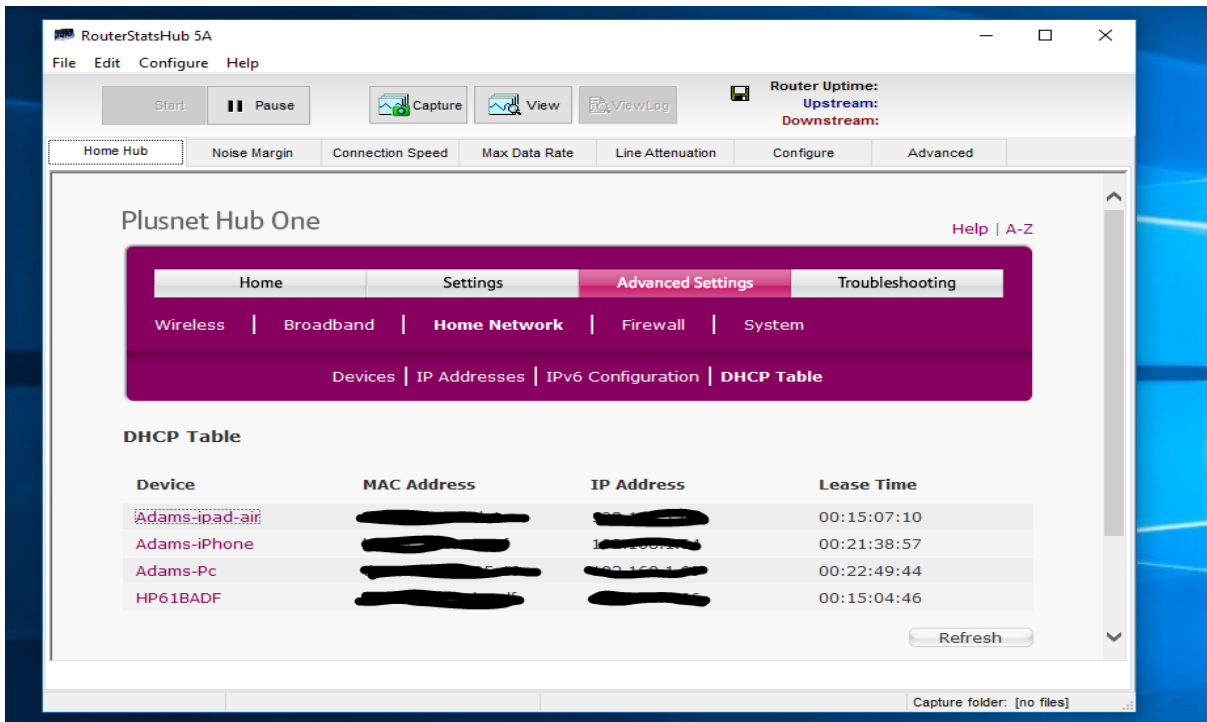
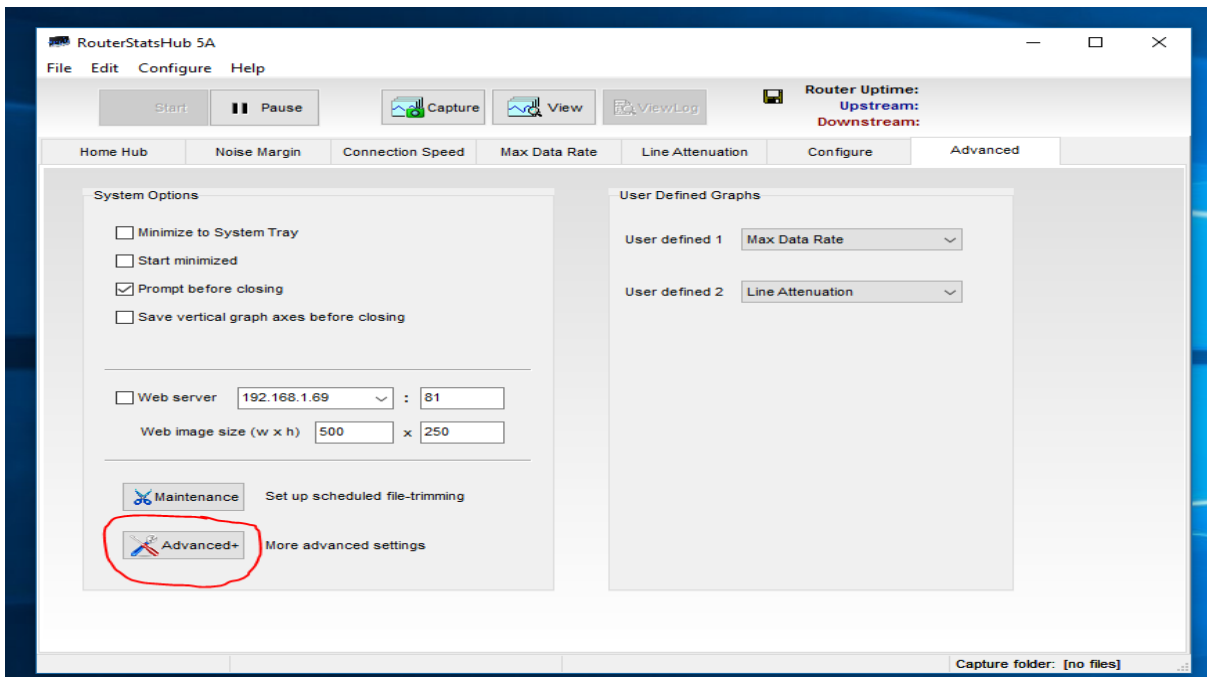


# How to get RouterStatsHub working with a plusnet one hub

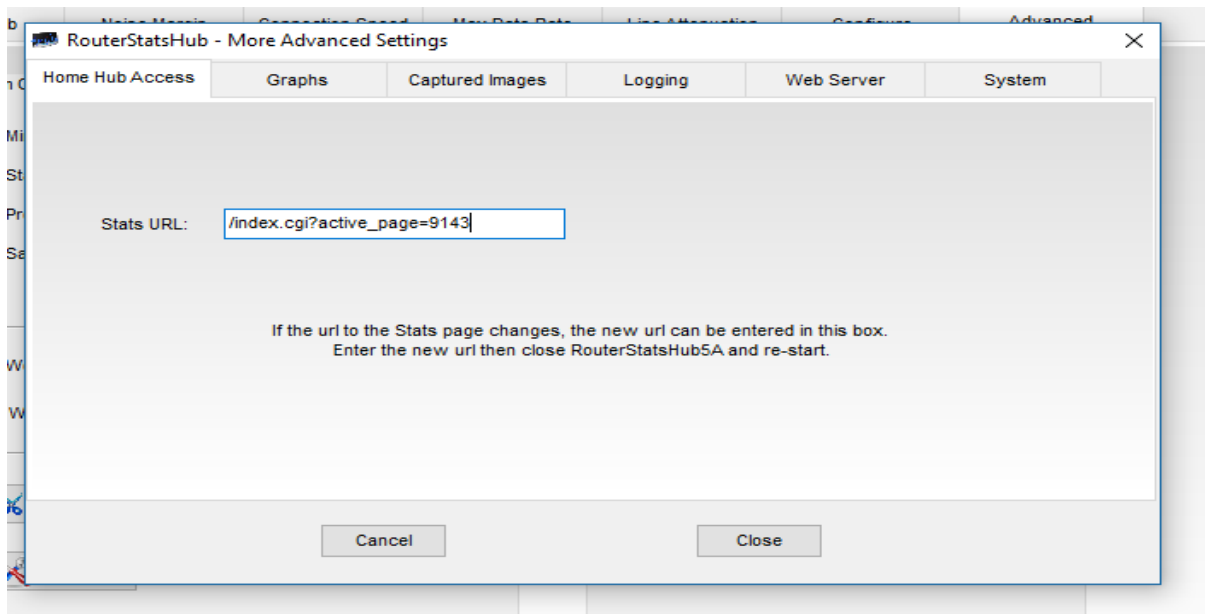
Once you have downloaded and extracted the programme run it and follow the standard install options you should then see this page



Then Click on the advanced tab to bring this page up



Now click advanced+ circled in red to bring this up



Change to the page number that matches your helpdesk page mine is 9143

Close the advanced+ box shut down routerstatshub and restart rouretstatshub

It should load like this then enable logging etc as you wish

